

A large, stylized yellow leaf graphic that occupies the left and top portions of the page. It features a thick yellow outline and a solid yellow fill on the left side, with several curved lines representing veins.

BANYAN HOMES

LIFE AT THE **BANYAN HOMES** IS CONCEIVED TO GIVE YOU THE BEST OF ALL WORLDS. THE HOUSE IS A REFLECTION OF SOPHISITICATION, COMFORT AND SIMPLE CONTEMPORARY LIVING WITH DISTINCTIVE TREATMENT ON THE INSIDE AND OUTSIDE. UNIQUE FEATURES AND THOUGHTFUL ATTENTION TO DETAILS COMBINE TO MAKE THE HOME A PERFECT, SAFE AND SECURE PLACE FOR THE LIFE THAT AWAITS YOU.

BANYAN HOMES IS STRATEGICALLY LOCATED, ENJOYING CONVENIENT ACCESS TO MAJOR LANDMARKS LIKE SCHOOLS, HOSPITALS, IT PARKS AND NATIONAL HIGHWAYS. RESIDENCES ALSO BENEFIT FROM THE WIDE VARIETY OF AMENITIES NEARBY. BEST OF ALL, BANYAN ALSO SHOWCASES AN ARCHETYPE OF A UNIQUE HOME AND ITS RELATIONSHIP TO THE OUTSIDE WORLD.

SPECIFICATIONS

Flooring

- Living, Dining & Bedrooms- Flooring / 2'x2' vitrified tiles
- Kitchen- 2'x2' Anti-skid vitrified tiles, Kithcen top with Granite finish.
- Balconies- Ceramic tiles with S.S. Handrails
- Car Parking- Pavit / Equivalent
- Bathrooms- Ceramic tiles (full height)
- Stairs - Granite, S.S. Handrails

Windows & Ventilators

- UPVC, Glazed

Doors

- Main door frame
- Solid wood panelled Burma teakwood doors with Burma teak wood frames solid wood finished with melamine matt polish and Polished Ironmongeries.
- Bed room & Toilet Balcony Door frames
- GHANA Teak wood with paint finish
- Bed room doors
- Veneer moulded Panel doors with polished finish (KALPATARU make); Stainless steel ironmongeries.
- Bathroom/Toilet & Balcony doors
- Decorative PVC moulded panel doors; Stainless steel ironmongeries.

Structure

- R.C.C Framed structure with brick plastered wall

Electrical

- All internal circuits in PVC tubes with ISI mark
- ISI mark quality wiring will be used for entire building (Finolex / RR Cables / any equivalent ISI Mark)
- Switches (Panasonic/Anchor/equivalent)
- Television, Telephone, A/c & Internet connection points in all rooms
- Adequate light, fan & power points

Plumbing

- Wall hung WC
- Health Faucet
- Wash Basin with spout
- Shower head from wall
- Bath & Shower Mixer
- Bath Spout

Painting

- Interior walls
- Emulsion paint
- Exterior
- External Emulsion paint

General Amenities

- Hard Landscape & Soft Landscape in appropriate open spaces
- Peripheral compound walls
- Anti-termite treatment
- Security cabin at entrance
- Video phones connected to security cabin
- Rain water harvesting
- Street lights
- Internal & External Roads
- Bore well with pumps for all Villas.
- Common area Bore well & EB connection.
- Balcony railings - Stainless steel hand rails.

MASTER PLAN



AMENITIES

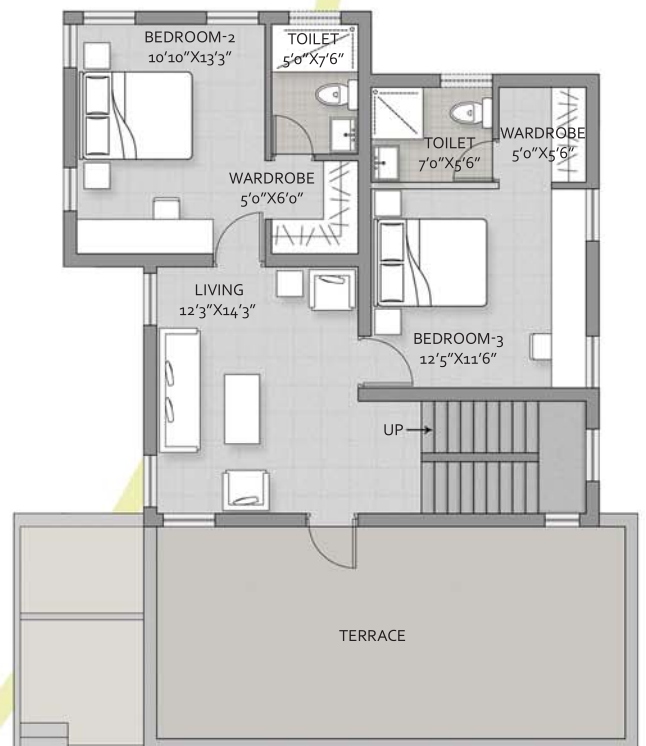
- GATED COMMUNITY WITH WELL LAID WIDE DRIVE WAYS
- AMPLE LANDSCAPE AREA ALL AROUND
- PARK FOR THE RESIDENTS AND CHILDREN
- STREET LIGHTS
- ROUND-THE-CLOCK-SECURITY
- INTERCOM FACILITIES
- RAIN WATER HARVESTING



VILLA 1



GROUND FLOOR PLAN

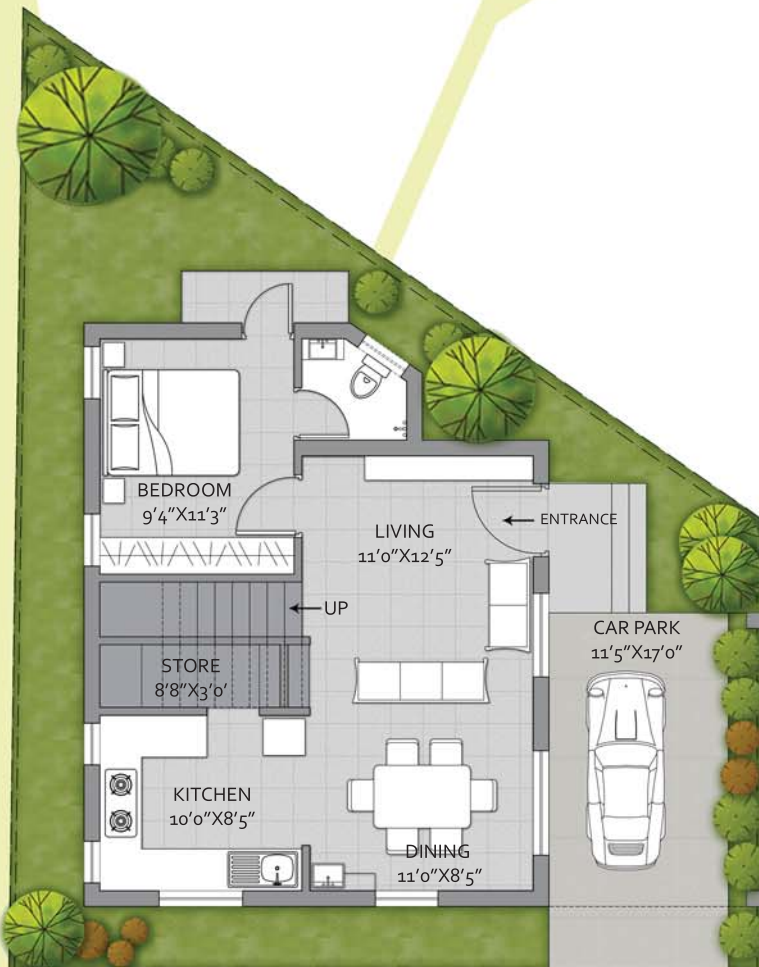


FIRST FLOOR PLAN

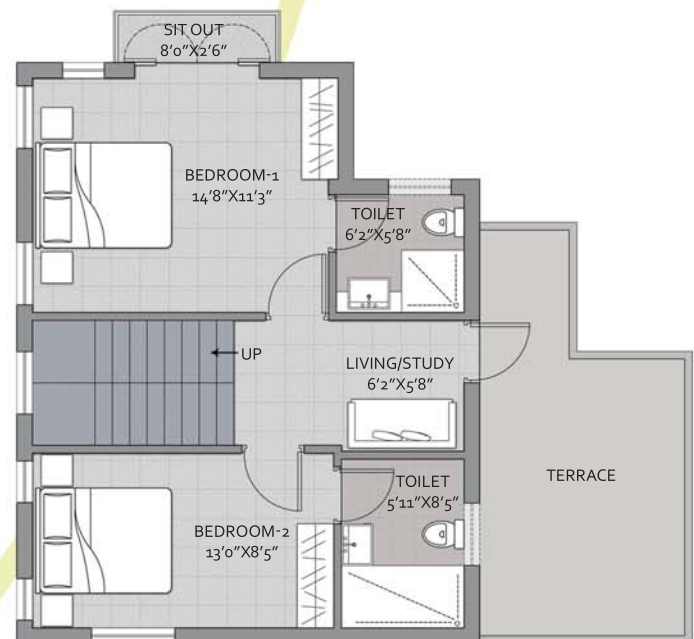
2195 sq.ft



VILLA 2



GROUND FLOOR PLAN

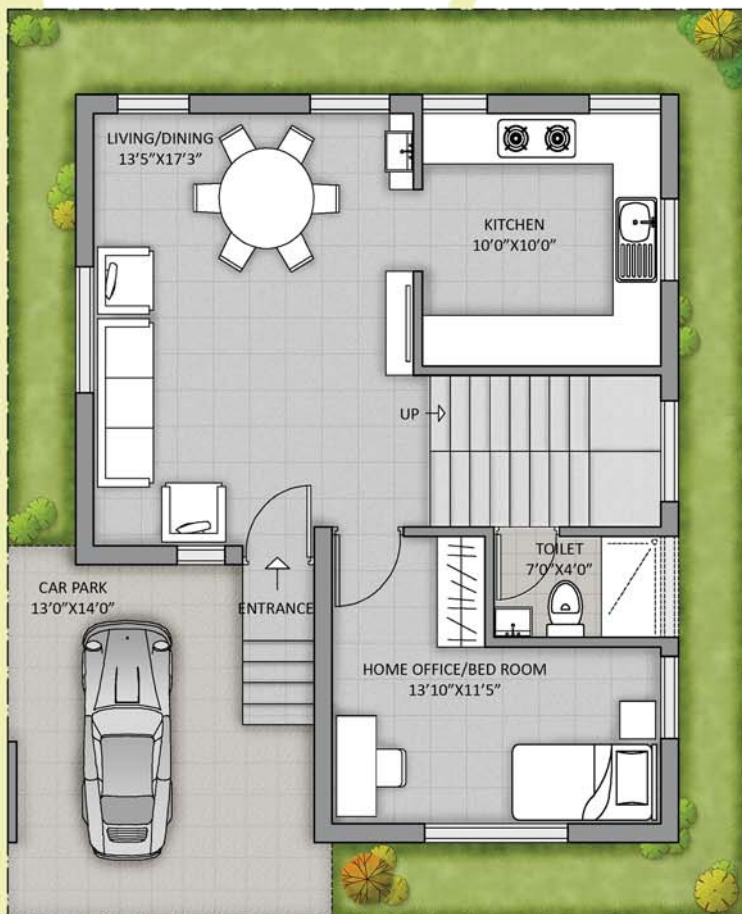


FIRST FLOOR PLAN

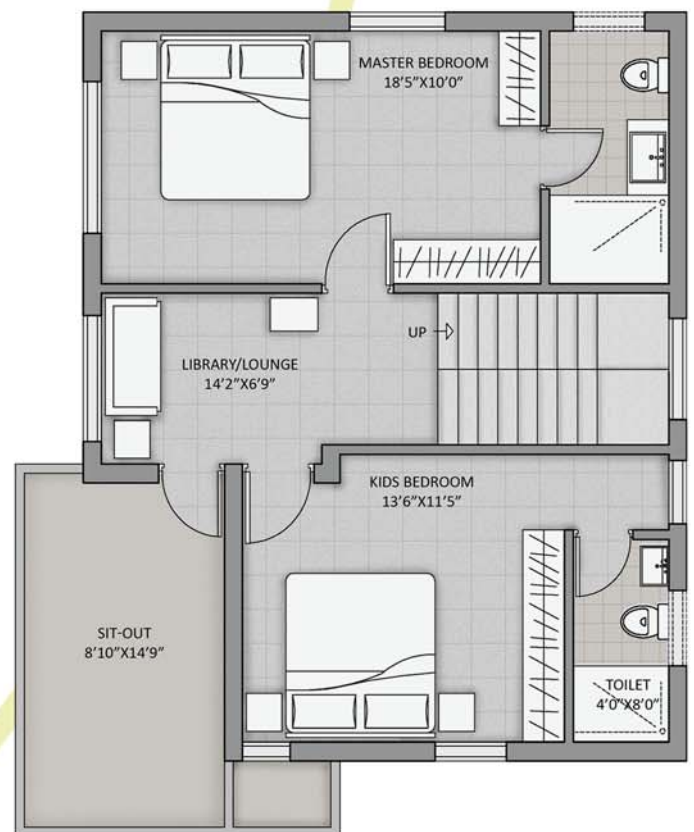
1494 sq.ft



VILLAS 3A & B



GROUND FLOOR PLAN



FIRST FLOOR PLAN

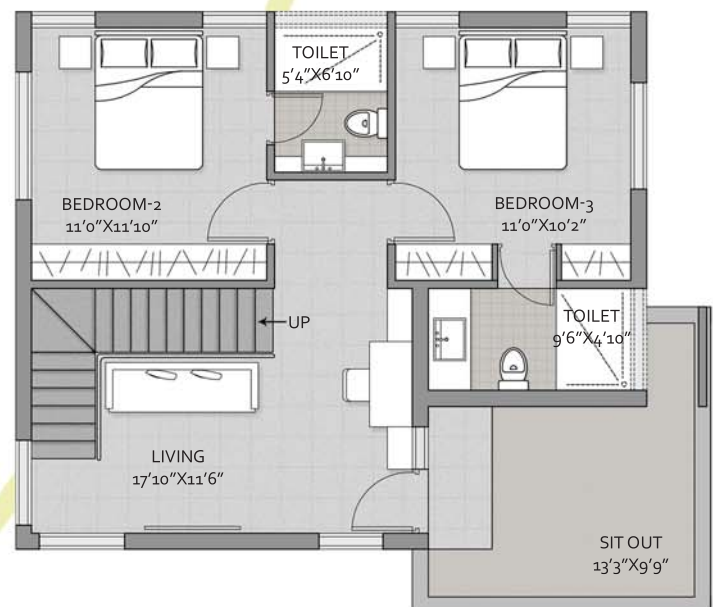
1621 sq.ft



VILLA 4



GROUND FLOOR PLAN



FIRST FLOOR PLAN

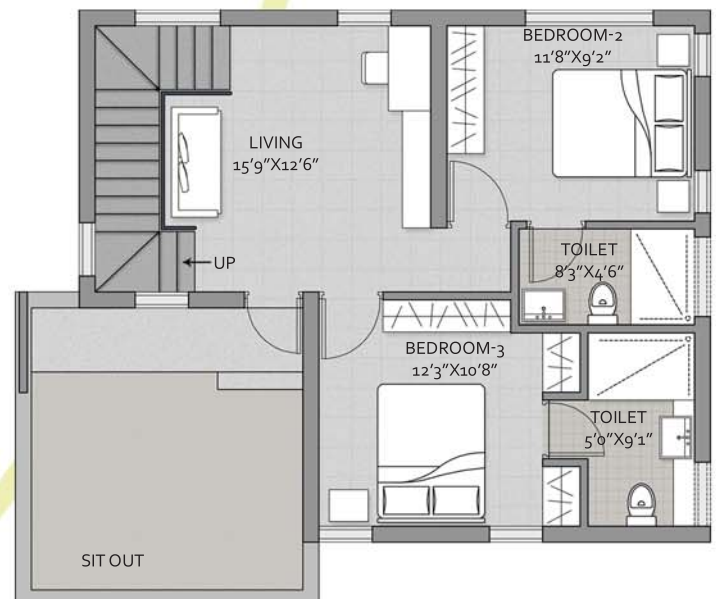
1627 sq.ft



VILLA 5



GROUND FLOOR PLAN



FIRST FLOOR PLAN

1621 sq.ft

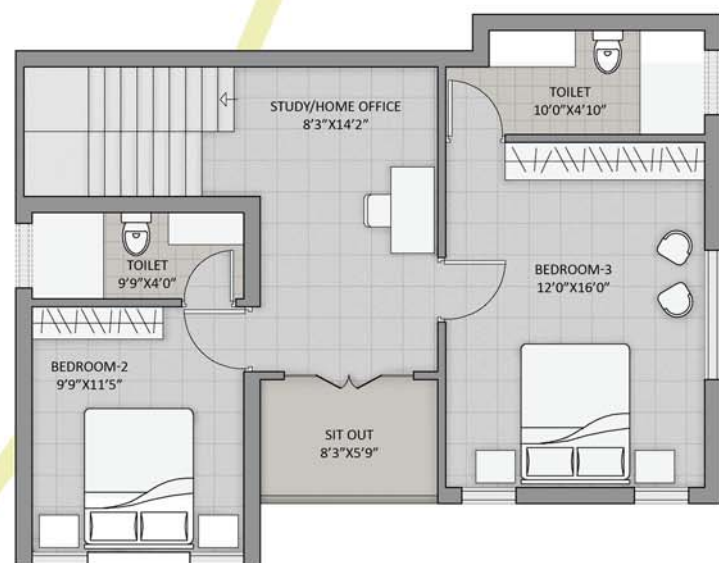


VILLAS 6A,B & C



GROUND FLOOR PLAN

1588 sq.ft for villas "6A & 6C".
1570 sq.ft for villa "6B".



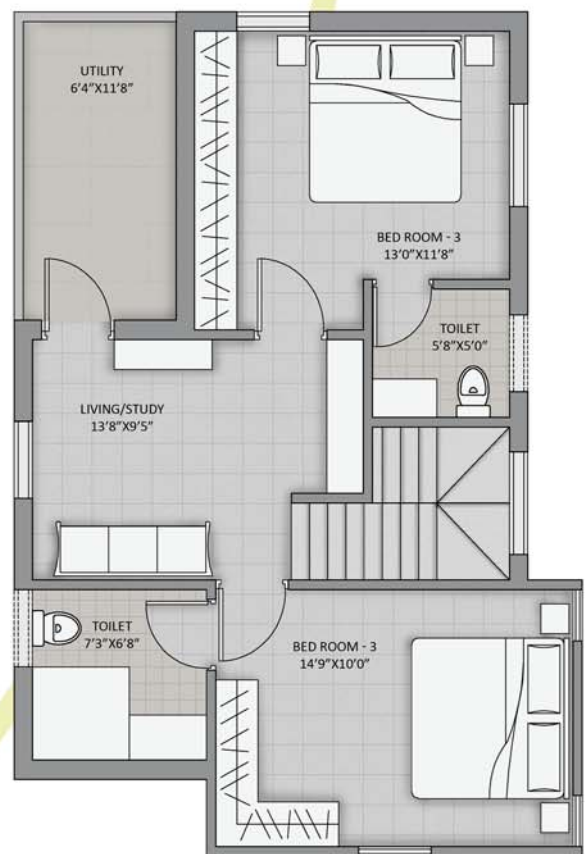
FIRST FLOOR PLAN



VILLAS 7A,B & C



GROUND FLOOR PLAN



FIRST FLOOR PLAN

"7A & 7B" - 1419 sq.ft; 7C - 1573 sq.ft.



LOCATION PLAN



MAJOR LANDMARKS NEAR BANYAN

- 1.5 KMS FROM MATTUTHAVANI INTEGRATED BUS STAND, MADURAI
 - 2 KMS FROM HIGH COURT, MADURAI
- STONES THROW AWAY FROM MADURAI MEENAKSHI MISSION HOSPITAL AND RESEARCH CENTRE
 - STONES THROW AWAY FROM TIDEL PARK AT ILANDHAIKULAM VILLAGE, RING ROAD CLOSE TO MAHATMA SCHOOL, LAKSHMI SCHOOL AND SEVERAL OTHER SCHOOLS
 - LOCATED ON THE MAIN HUB ON RING ROAD CONNECTING MAJOR HIGHWAYS FROM CHENNAI, TO KANYAKUMARI, RAMESWARAM AND TUTICORIN

BANYAN HOMES

star avenue

ring road

madurai 625 107



"Chennai Citi Centre", 4th Floor
10&11, Dr.Radhakrishnan Salai
Mylapore, Chennai - 600004.
India

t 91 44 49006264
e life@banyanhomes.co.in
w banyanhomes.co.in

an ALS INFRASTRUCTURES venture ©2015

THIS BROCHURE IS NOT A LEGAL OFFERING. ALL BUILDING LAYOUTS, SPECIFICATIONS ETC, AS SEEN IN THE BROCHURE/PICTURES, ARE CONCEPTUAL AND SUBJECT TO CHANGE BASED ON SITE CONDITIONS.